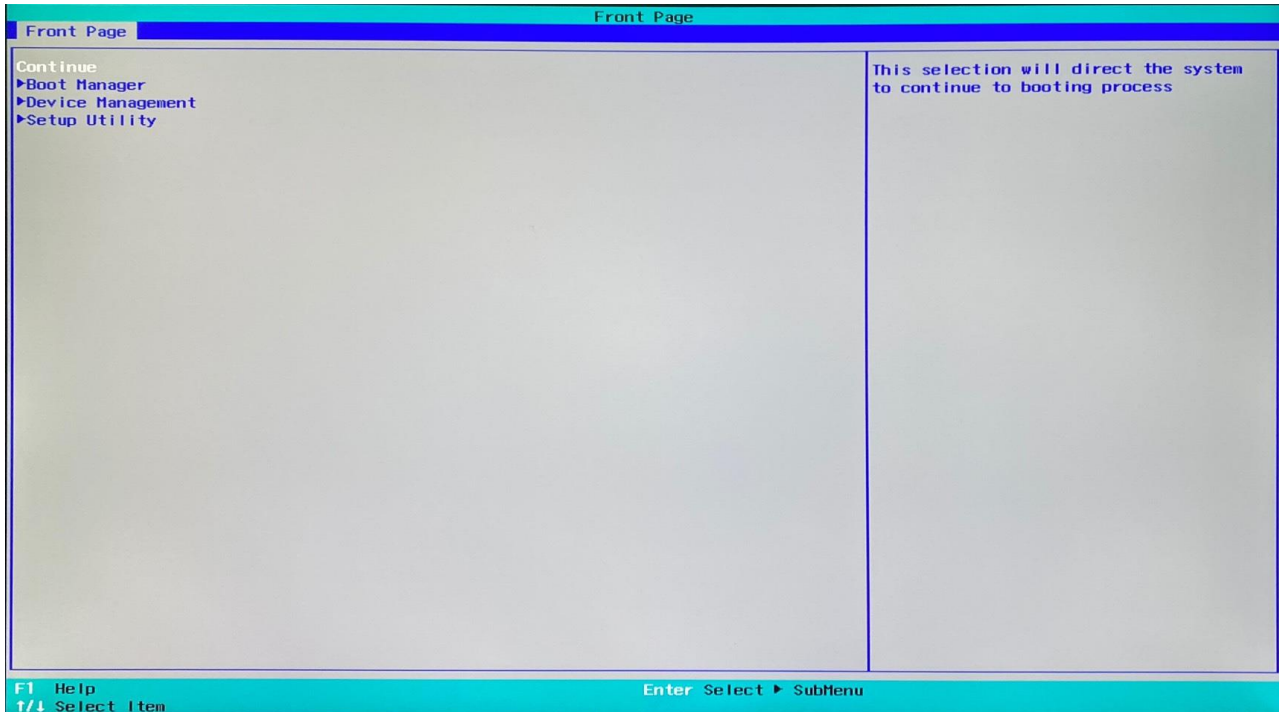


## M350C BIOS user manual

Boot up system, press <Del> key immediately and repeatedly until the following screen present, then select the “Setup Utility” menu into BIOS Setup.



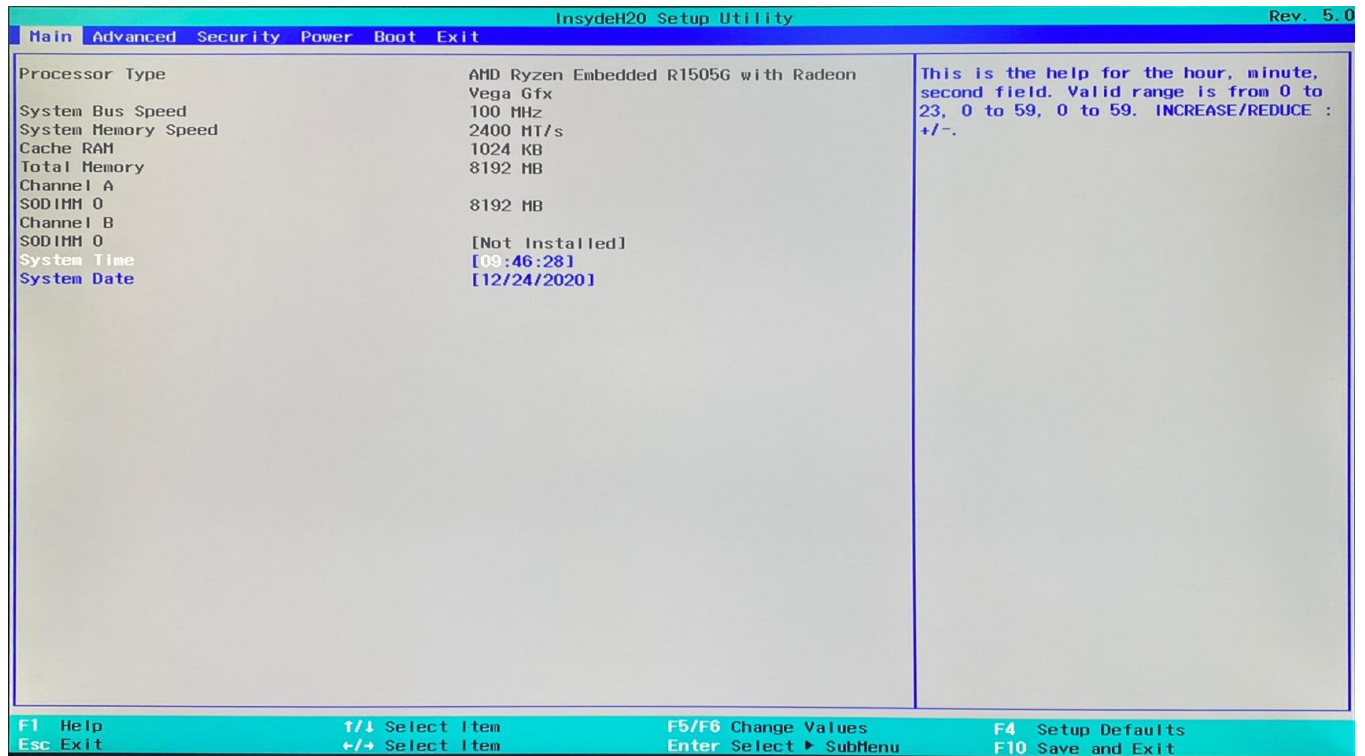
To move through the BIOS, use the keyboard keys as listed in the following table:

Key on keyboard	Description of function
Left or right arrow key	Selects a different menu screen.
Up or down arrow key	Selects an item.
Enter	Executes a command or selects a submenu.
F9	View the system information
F4	Load optimal defaults
F5/F6	Change values
F10	Saves the current values and exits the BIOS Setup program.
ESC	Exits the menu or the BIOS Setup program without saving.
F1	Help

## Setup Utility

### 1. Main menu

The Main menu provides you an overview of the basic system information, and allows you to set the system date and time.



## 2. Advanced menu

The Advanced menu items allow you to change the settings for system devices.

### 2.1 Boot Configuration

#### Numlock

This item allows you to switch Numlock status to On or Off when system power on.

### 2.2 Peripheral Configuration

#### Azalia

This item allows you to select Enabled or Disabled on board audio chip.

#### EMMC Configuration

This item allows you to select Enabled or Disabled on board eMMC device state.

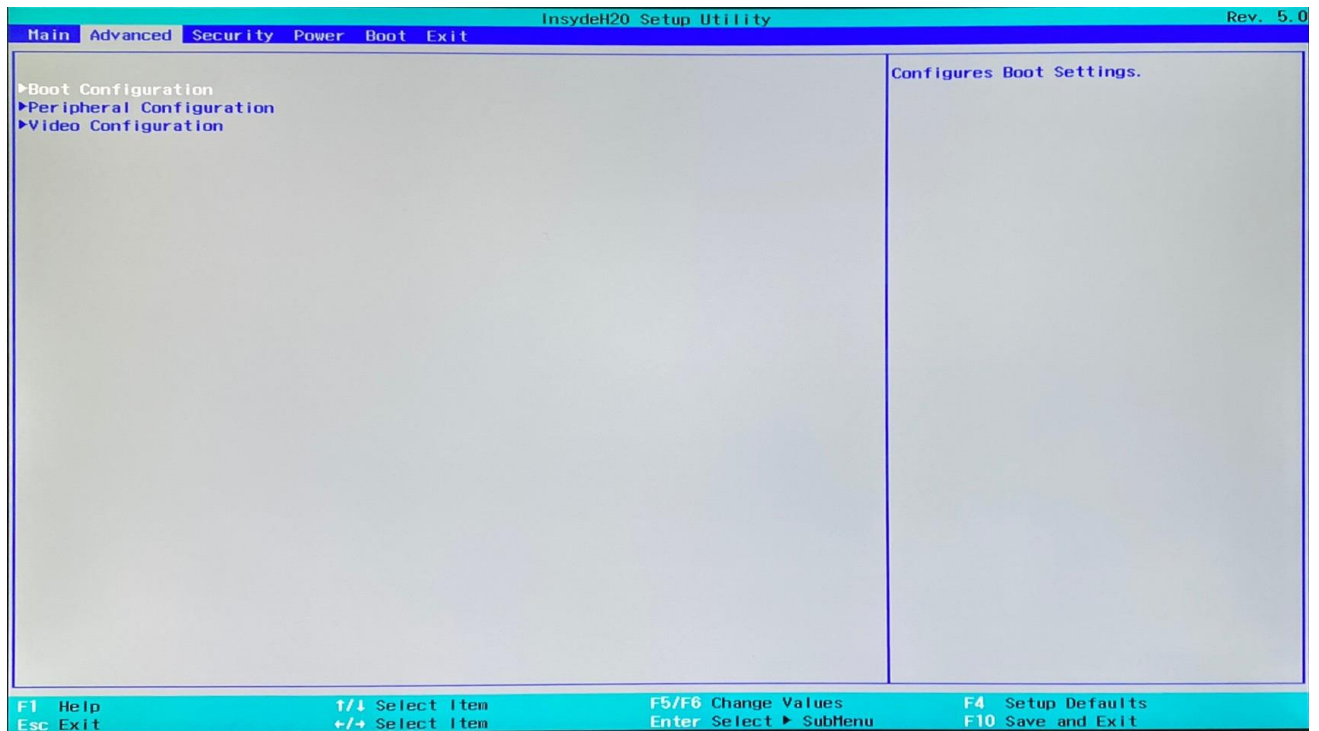
### 2.3 Video Configuration

#### UMA Mode

This item allows you to select on board share memory size.

#### DP Audio

This item allows you to select Enabled or Disabled for DP Audio function.



### 3. Security menu

The Security menu items allow you to change the system security settings.

#### 3.1 Set Supervisor Password

This item allows you to set BIOS supervisor password.

If you have set a supervisor password, we recommend that you enter the supervisor password for accessing the system.

#### 3.2 Enforce Secure Boot

This item allows you to configure Secure Boot settings and manage its keys to protect the system from unauthorized access and malwares during POST.

#### 3.3 Erase all Secure Boot Settings

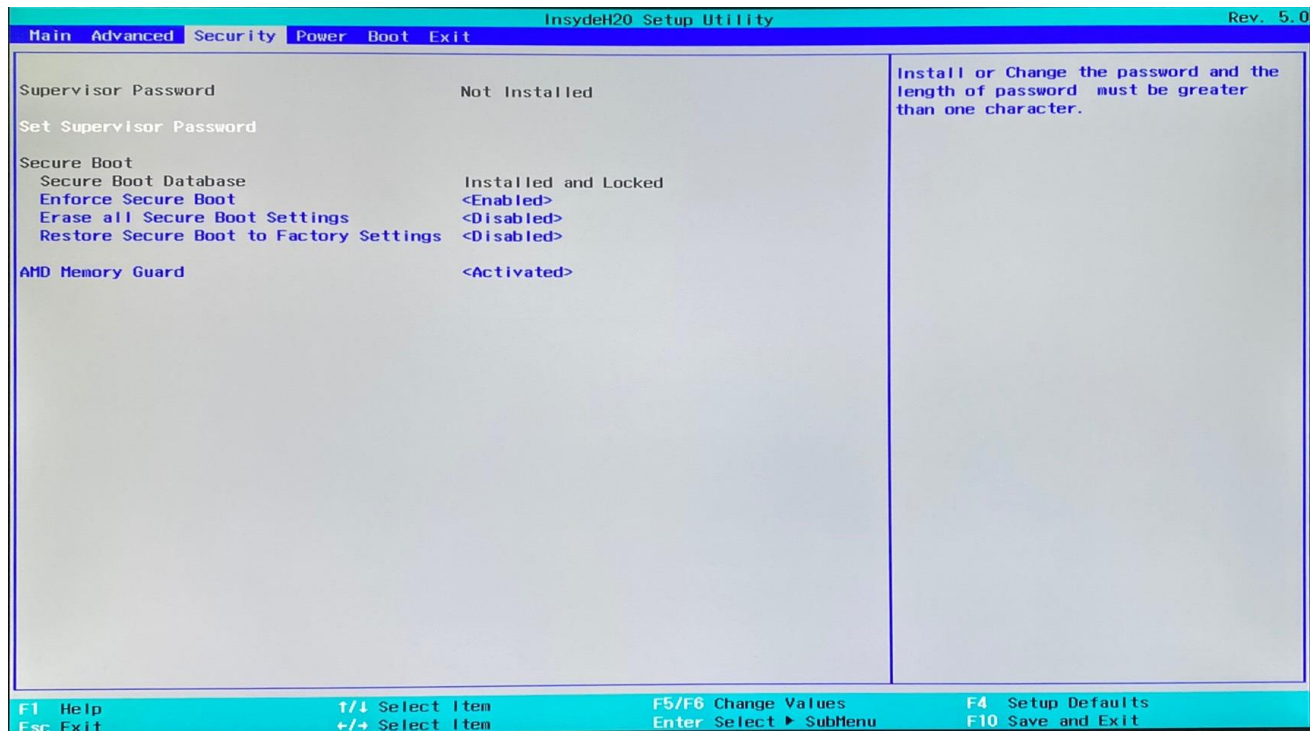
This item allows you to erase secure boot settings.

#### 3.4 Restore Secure Boot to Factory Settings

This item allows you to restore secure boot settings.

#### 3.5 AMD Memory Guard

This item allows you to Activated or Deactivated the AMD memory guard technology.



## 4. Power menu

The Power menu items allow you to change power management technologies to assist in operating.

### 4.1 RTC Alarm Control in S5

This item allows you to Enabled or Disabled the RTC (Real-Time Clock) to generate a wake event and configure the RTC alarm date. When enabled, you can set the days, hours, minutes, or seconds to schedule an RTC alarm date.

### 4.2 Power Button Delay 4s

This item allows you to Enabled or Disabled the press power button 4 secs for shut down system.

### 4.3 ErP Power Control

This item allows you to switch off some power at S3 + S5 to get the system ready for ErP requirement.

### 4.4 USB Wake from S3

This item allows you to Enabled or Disabled for USB wake event from S3.

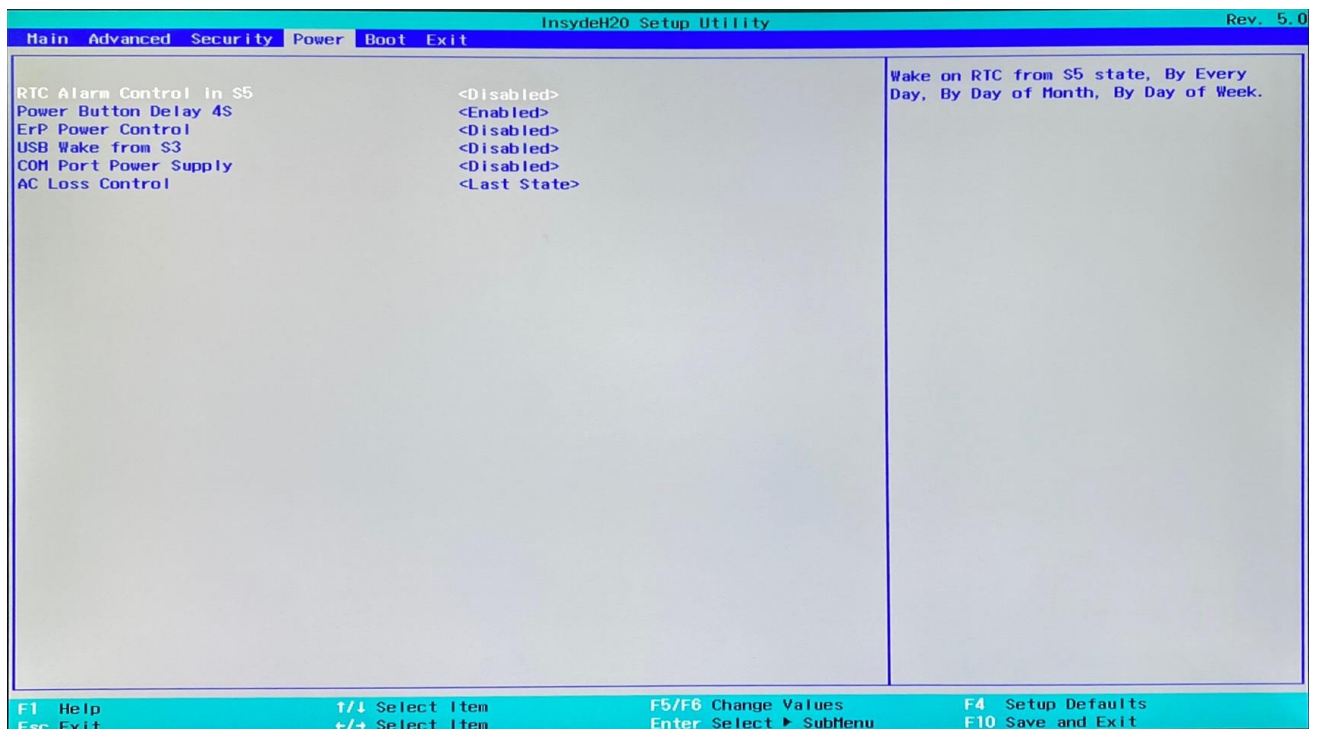
### 4.5 COM Port Power Supply

This item allows you to set 5V or Disabled on board COM Port Power Supply.

### 4.6 AC Loss Control

This item allows your system to go to ON state, OFF state, or Last state.

When setting your system to [Last state], it goes to the previous state before the AC power loss.



## 5. Boot menu

The Boot menu items allow you to change the system boot options.

### 5.1 Quiet Boot

This item allows you to Enabled or Disabled for booting in Text mode.

### 5.2 Onboard LAN Boot Rom

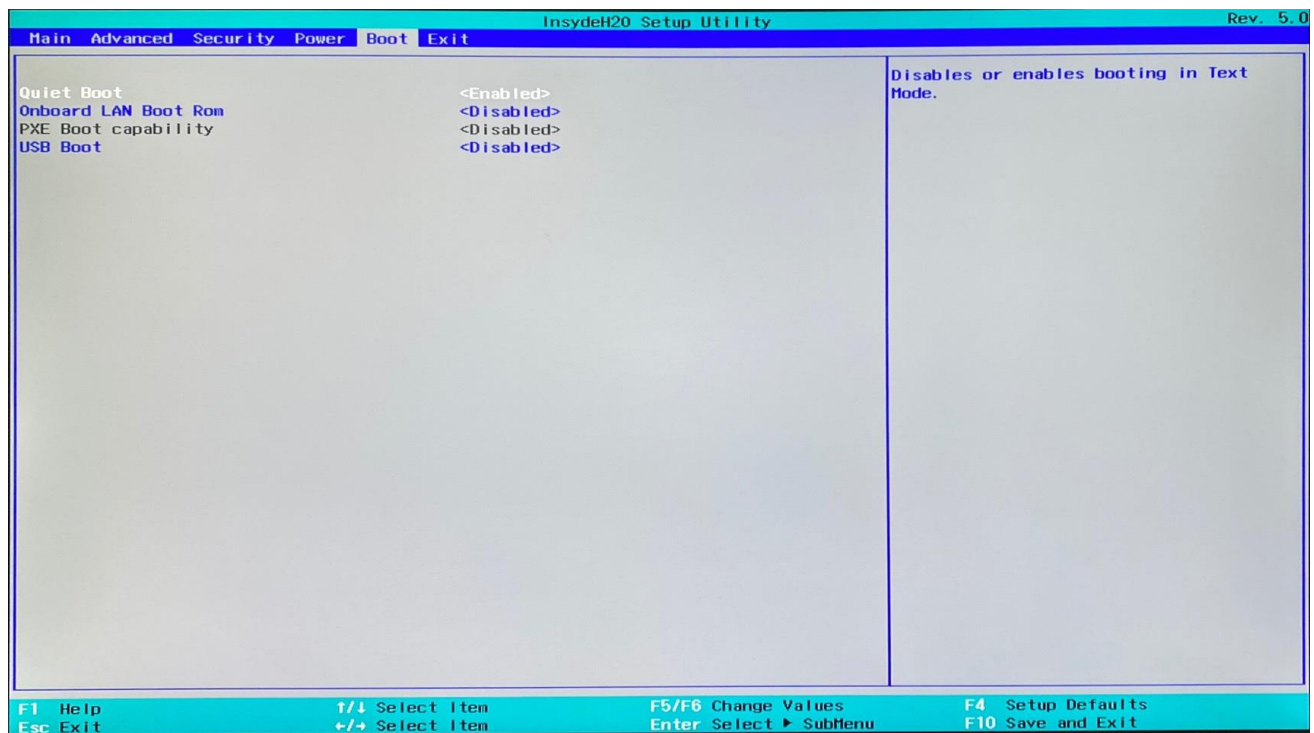
This item allows you to Enabled or Disabled the Onboard LAN Boot Rom.

### 5.3 PXE Boot Capability

This item allows you to Enabled or Disabled the Ipv4/Ipv6 PXE wake event.

### 5.4 USB Boot

This item allows you to Enabled or Disabled the USB boot devices





## 6. Exit menu

The Exit menu items allow you to load the optimal default values for the BIOS items, and save or discard your changes to the BIOS items.

### 6.1 Exit Saving Changes

This option allows you to exit the Setup program with saving your changes.

### 6.2 Save Change Without Exit

This option allows you to saving your changes without exit Setup program.

### 6.3 Exit Discarding Changes

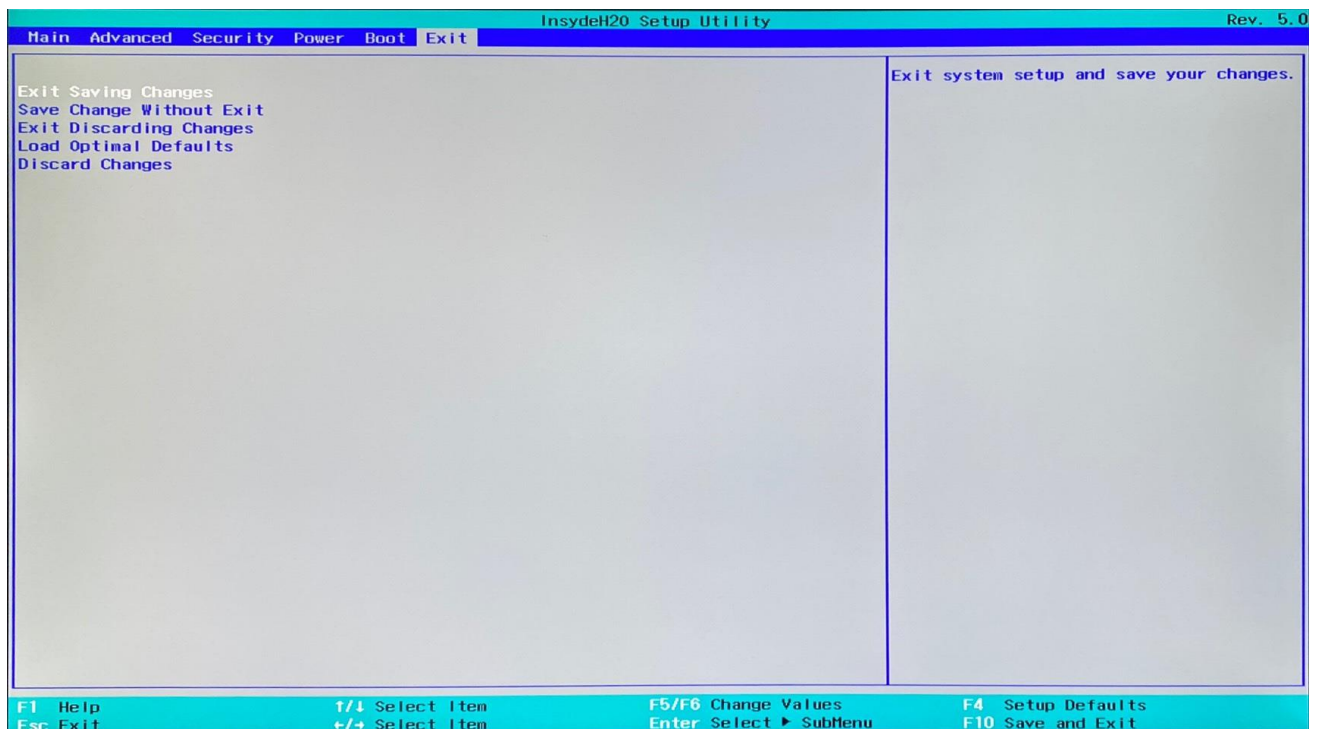
This option allows you to exit the Setup program without saving your changes.

### 6.4 Load Optimal Defaults

This option allows you to load the default values for each of the parameters on the Setup menus.

### 6.5 Discard Changes

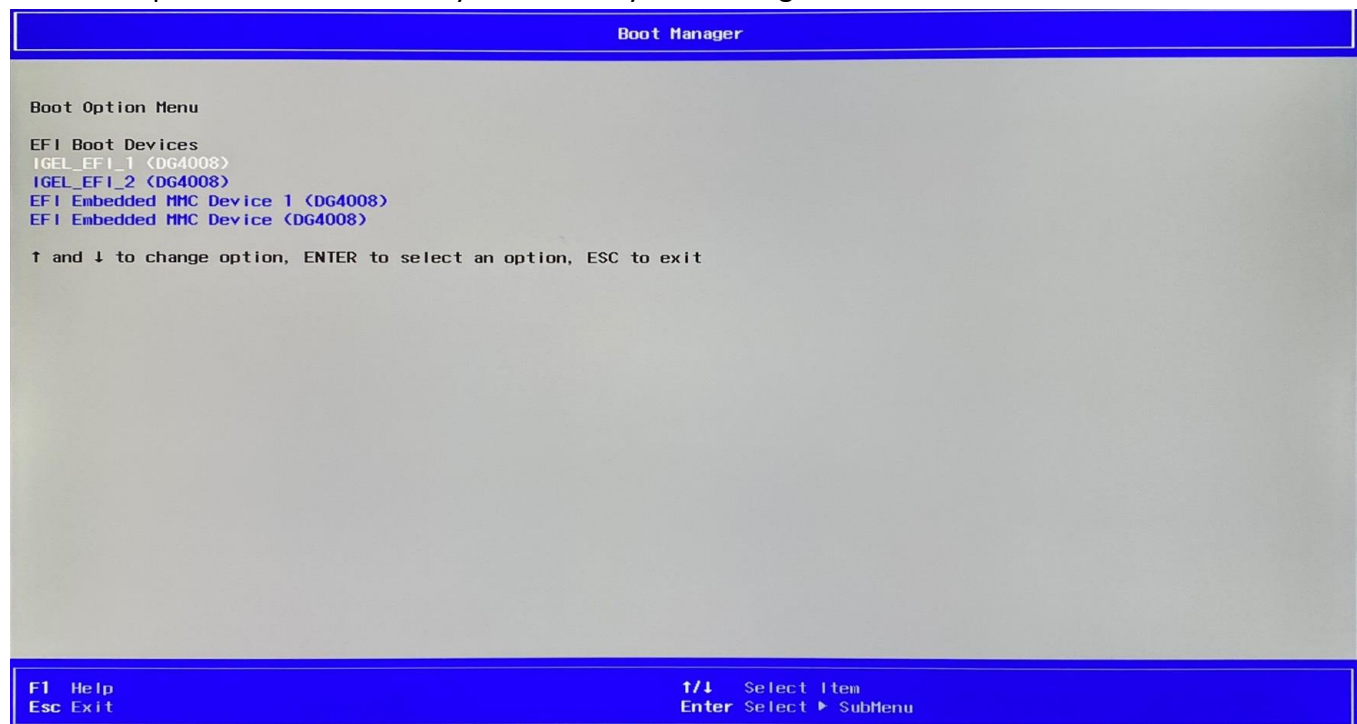
This option allows you to discard your changes without exit Setup program.



# Appendix:

## Boot Manager

The Boot option menu item allow you to select your booting device.



## Device Management

The Devices List menu item allow you to setup network configuration of IPV4/IPV6 when you Enabled Onboard LAN Boot Rom.

